

- regular periodic inspections are the essential for equipment maintenance and the safety of the users which depends upon the continued efficiency and durability of the equipment.
- during periodic inspection it is necessary to check the legibility of the equipment marking.
- it is essential for the safety of the user that if the product is re-sold outside the original country of destination the reseller shall provide instructions for use, for maintenance, for periodic examination and for repair in language of the country in which the product is to be used.
- personal protective equipment must be withdrawn from use immediately when any doubt arise about its condition for safe use and not used again until confirmed in writing by equipment manufacturer or his representative after carried out the detailed inspection.
- personal protective equipment must be withdrawn from use immediately and destroyed (or another procedures shall be introduced according detailed instruction from equipment manual) when it have been used to arrest a fall.
- a full body harness is the only acceptable body holding device that can be used in a fall arrest system.
- the anchor device or anchor point for the fall arrest system should always be positioned, and the work carried out in such a way, as to minimise both the potential for falls and potential fall distance. The anchor device/point should be placed above the position of the user. The shape and construction of the anchor device/point shall not allowed to self-acting disconnection of the equipment. Minimal static strength of the anchor device/point is 12 kN. It is recommended to use certified and marked structural anchor point complied with EN795.
- it is obligatory to verify the free space required beneath the user at the workplace before each occasion of use the fall arrest system, so that, in the case of a fall, there will be no collision with the ground or other obstacle in the fall path. The required value of the free space should be taken from instruction manual of used equipment.
- there are many hazards that may affect the performance of the equipment and corresponding safety precautions that have to be observed during equipment utilization, especially:
  - trailing or looping of lanyards or lifelines over sharp edges;
  - any defects like cutting, abrasion, corrosion;
  - climatic exposure;
  - pendulum falls;
  - extremes of temperature;
  - chemical reagents;
  - electrical conductivity.
- personal protective equipment must be transported in the package (e.g.: bag made of moisture-proof textile or foil bag or cases made of steel or plastic) to protect it against damage or moisture.
- the equipment can be cleaned without causing adverse effect on the materials in the manufacture of the equipment. For textile products use mild detergents for delicate fabrics, wash by hand or in a machine and rinse in water. Plastic parts can be cleaned only with water. When the equipment becomes wet, either from being in use or when due cleaning, it shall be allowed to dry naturally, and shall be kept away from direct heat. In metallic products some mechanic parts (spring, pin, hinge, etc.) can be regularly slightly lubricated to ensure better operation. Other maintenance and cleaning procedures should be adhered to detailed instructions stated in the manual of the equipment.
- personal protective equipment should be stored loosely packed, in a well-ventilated place, protected from direct light, ultraviolet degradation, damp environment, sharp edges, extreme temperatures and corrosive or aggressive substances.

IT IS THE RESPONSIBILITY OF THE USER ORGANISATION TO PROVIDE THE IDENTITY CARD AND TO FILL IN THE DETAILS REQUIRED. THE IDENTITY CARD SHOULD BE FILLED IN BEFORE THE FIRST USE BY A COMPETENT PERSON, RESPONSIBLE IN THE USER ORGANIZATION FOR PROTECTIVE EQUIPMENT. ANY INFORMATION ABOUT THE EQUIPMENT LIKE PERIODIC INSPECTIONS, REPAIRS, REASONS OF EQUIPMENT'S WITHDRAWAL FROM USE SHALL BE NOTED INTO THE IDENTITY CARD BY A COMPETENT PERSON.

## IDENTITY CARD

MODEL AND TYPE OF EQUIPMENT	REF. NUMBER
-----------------------------	-------------

SERIAL NUMBER	DATE OF MANUF.
---------------	----------------

USER NAME
-----------

DATE OF PURCHASE	DATE OF PUTTING INTO OPERATION
------------------	--------------------------------

### PERIODIC EXAMINATION AND REPAIR HISTORY

No.	DATE	REASON FOR ENTRY PERIODIC EXAMINATION OR REPAIR	DEFECTS NOTED, REPAIRS CARRIED OUT AND OTHER RELEVANT INFORMATIONS	NAME AND SIGNATURE OF COMPETENT PERSON	PERIODIC EXAMINATION NEXT DUE DATE

SafetyLiftinGear.com  
Unit R1D Rockingham Gate Poplar Way  
West Cabot Park Bristol BS11 0YW  
Tel: 0808 123 69 69 Fax: 0117 9381 602  
sales@safetyliftinggear.com

Notified body, at which the European certification was performed and which supervises the production of the equipment:  
APAVE SUDEUROPE SAS - BP 193 -  
13322 MARSEILLE CEDEX 16 - FRANCE



## Instruction Manual

### READ CAREFULLY BEFORE USE THE EQUIPMENT

CE 0082 EN 361:2002  
Ref.: AB 134 03

Safety harness is basic fall arrest equipment complied with EN 361.

#### DESCRIPTION

Full body harness P-34EL is made of polyester/polyamide 45 mm wide webbings which are sewn and connected by metal buckles. This configuration guarantees full safety and comfort work.

#### BASIC EQUIPMENT

- back attaching buckle - for attaching fall arrest systems
- connecting and adjusting buckles - for comfort wearing and using of harness
- front attaching buckle - for fall arrest systems

#### SIZES

The harness P-34EL is manufactured in two sizes:  
- universal: M-XL  
- extra large: XXL

#### Periodic inspections

The harness must be inspected at least once every 12 months from the date of first use.

Periodic inspections must only be carried out by a competent person who has the knowledge and training required for personal protective equipment periodic inspections.

Depending upon the type and environment of work, inspections may be needed to be carried out more frequently than once every 12 months.

#### Maximum lifespan of the equipment

The maximum lifespan of the harness is 10 years from the date of manufacture. This is irrespective of shelf life and working life. The harness must be withdrawn from use immediately and destroyed when it has been used to arrest a fall.

#### CONTENT OF HARNESS IDENTITY LABEL

trade mark of the device **P-34EL-QR**

type of the device **SAFETY HARNESS**

reference number **Ref. AB 134 03**

size \_\_\_\_\_ Size:  M-XL  
 XXL

month/year of the device manufacture \_\_\_\_\_ Date of manufacture: MM / YYYY

number of the manufacturing series \_\_\_\_\_ Serial number: XXX XXX

number / year of the European standards the equipment conform **EN 361:2002**

CE marking and number of a notified body **CE 0082**

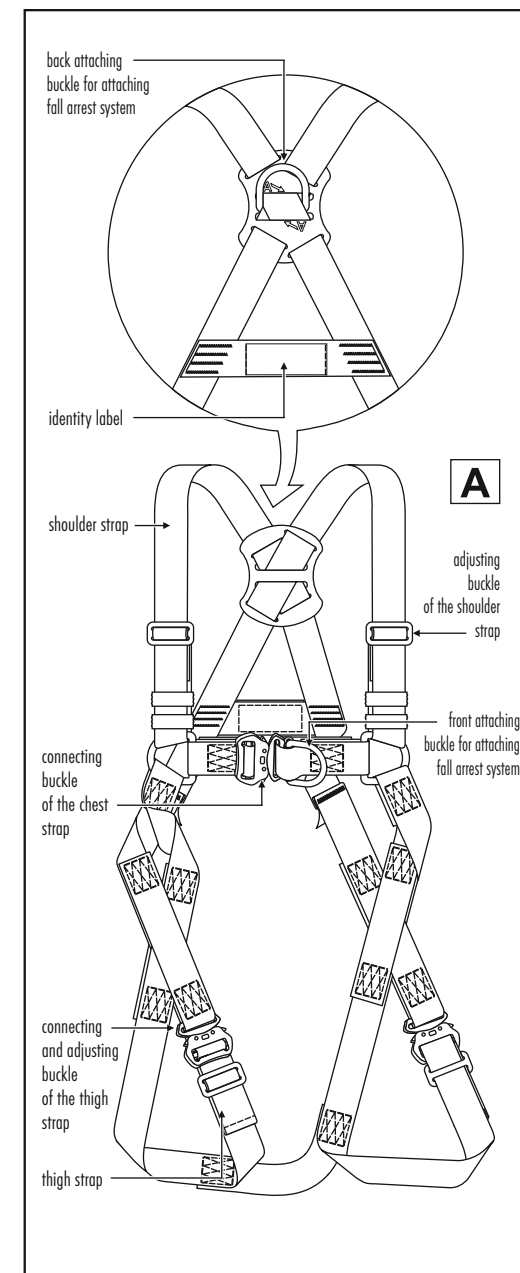
controlling manufacturing of the equipment [art. 11] \_\_\_\_\_

caution: read the manual

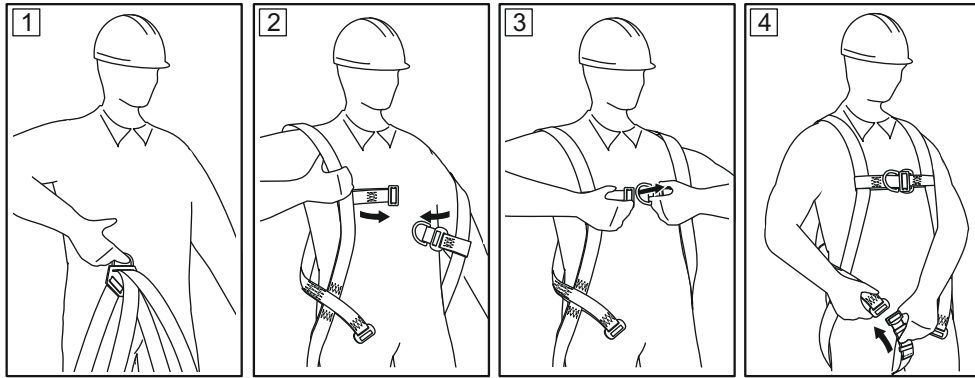
marking of the manufacturer or distributor



## SAFETY HARNESS P-34EL-QR



## HOW TO PUT ON THE HARNESS



1 Take the harness by the back attaching buckle.

2 Put on the shoulder straps one after one, take care do not twist them.

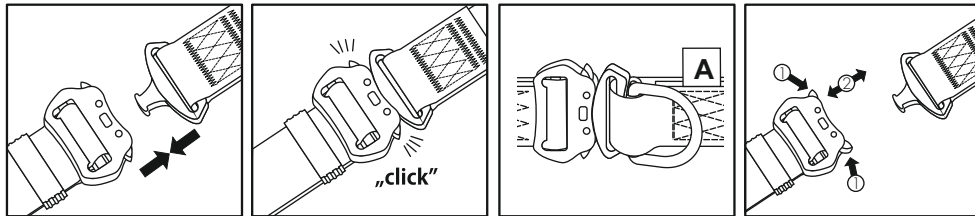
3 Connect chest strap buckle and adjust the tension the chest strap.

4 Pull one and then other thigh straps through crotch, take care do not twist them.

### Connecting of the steel buckles of the thigh straps and chest strap

### Fastening the straps

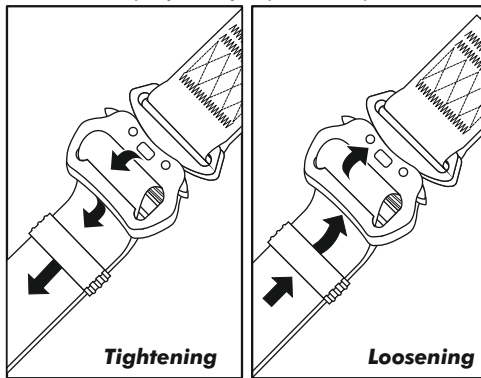
Push the parts of the buckle together until the "click" sound is noticeable. Check if the buckle is locked and functioning properly.



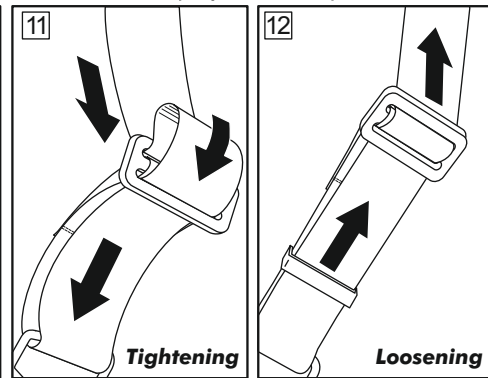
### Opening the straps

Push the parts of the buckle together while simultaneously pressing the two unlocking buttons (1). Pull the buckle halves apart (2).

### Adjusting of the thigh straps and chest strap



### Adjusting of the shoulder straps



### Harness is put on correctly if:

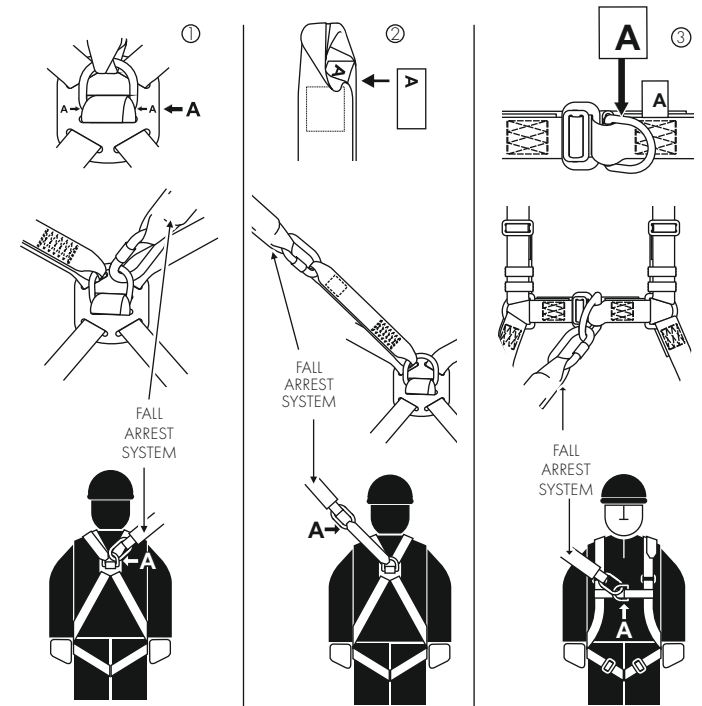
- all straps are correctly adjusted (neither too loose nor too tight).
- back attaching buckle is correctly positioned at the level of the shoulder blades.
- front chest strap is correctly positioned at the middle of the chest.
- the ends of all the straps must be kept by plastic loops.

## ATTACHING

### A FALL ARREST SYSTEM

Fall arrest system must be only connected to the anchorage points of the Harness marked by the capital letter A in the following way:

- A fall arrest system can be either connected to the rear D ring marked with the letter A (fig. 1), or front D ring marked with letter A (fig. 3),
- The rear extension strop (fig. 2) can be used to connect a fall arrest system to the loop marked A. The length of the strop must be taken into consideration when required free clearance below working platform is calculating. When not in use this extension strop can be parked over the shoulder and secured with the Velcro patch provided.



Using the harness in connection with fall arrest system must be compatible with manual instructions of the fall arrest systems and obligatory standards:

- EN353-1, EN353-2, EN355, EN354, EN360, EN362 - for the fall arrest systems;
- EN795 - for anchor devices;
- EN341 - for the rescue equipment.

## THE ESSENTIAL PRINCIPLES FOR USERS OF PERSONAL PROTECTIVE EQUIPMENT AGAINST FALLS FROM A HEIGHT

- personal protective equipment shall only be used by a person trained and competent in its safe use.
- personal protective equipment must not be used by a person with medical condition that could affect the safety of the equipment user in normal and emergency use.
- a rescue plan shall be in place to deal with any emergencies that could arise during the work.
- it is forbidden to make any alterations or additions to the equipment without the manufacturer's prior written consent.
- any repair shall only be carried out by equipment manufacturer or his certified representative.
- personal protective equipment shall not be used outside its limitations, or for any purpose other than that for which it is intended.
- personal protective equipment should be a personal issue item.
- before use ensure about the compatibility of items of equipment assembled into a fall arrest system. Periodically check connecting and adjusting of the equipment components to avoid accidental loosening or disconnecting of the components.
- it is forbidden to use combinations of items of equipment in which the safe function of any one item is affected by or interferes with the safe function of another.
- before each use of personal protective equipment it is obligatory to carry out a pre-use check of the equipment, to ensure that it is in a serviceable condition and operates correctly before it is used.
- during pre-use check it is necessary to inspect all elements of the equipment in respect of any damages, excessive wear, corrosion, abrasion, cutting or incorrect acting, especially take into consideration:
  - in full body harnesses and belts - buckles, adjusting elements, attaching points, webbings, seams, loops;
  - in energy absorbers - attaching loops, webbing, seams, casing, connectors;
  - in textile lanyards or lifelines or guidelines - rope, loops, thimbles, connectors, adjusting element, splices;
  - in steel lanyards or lifelines or guidelines - cable, wires, clips, ferrules, loops, thimbles, connectors, adjusting elements;
  - in retractable fall arresters - cable or webbing, retractor and brake proper acting, casing, energy absorber, connector;
  - in guided type fall arresters - body of the fall arrester, sliding function, locking gear acting, rivets and screws, connector, energy absorber;
  - in connectors - main body, rivets, gate, locking gear acting.
- after every 12 months of utilization, personal protective equipment must be withdrawn from use to carry out periodical detailed inspection. The periodic inspection must be carried out by a competent person for periodic inspection.  
In case of some types of the complex equipment e.g. some types of retractable fall arresters the annual inspection can be carried out only by the manufacturer or his authorized representative.